

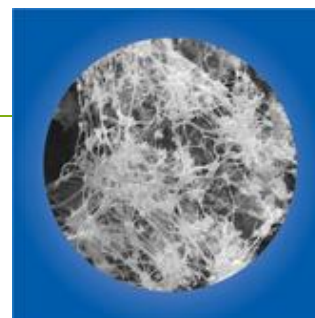


PTFE Membrane Disc Filters

Description

Strong, Chemically Resistant Membranes for Air Monitoring and Sampling in Aggressive Environments

- ▶ Low chemical background permits highly sensitive, interference-free determinations.
- ▶ Ensures accurate gravimetric determinations with low tare mass.
- ▶ Zefluor™ membrane, available in 0.5 µm pore size.
- ▶ Ideal for filtration of gas and/or organic solvents.



Application

- ▶ For air monitoring and sampling in aggressive environments.
- ▶ Supported membranes offer increased durability for hostile testing environments or acid aerosol monitoring.
- ▶ Teflo membrane offers unique PMP support ring for PM 10 and PM 2.5 dichotomous and other air sampling techniques.
- ▶ Ultimate in chemical compatibility for filtering harsh chemicals and HPLC mobile phases that destroy other membrane materials.

Specifications

Description	Zefluor™ Membrane	Teflo Membrane	Zylon™ Membrane	TF (PTFE) Membrane
Filter Media/Support	PTFE with PTFE support	PTFE with PMP (polymethyl-pentene) support ring	Unsupported PTFE	PTFE on a polypropylene support
Typical Thickness	0.5 µm: 178 µm (7 mils) 1 µm: 165 µm (6.5 mils) 2 and 3 µm: 152 µm (6 mils)	1 µm: 76 µm (3 mils) 2 µm: 46 µm (1.8 mils) 3 µm: 30.4 µm (1.2 mils)	140 µm (5.5 mils)	0.2 µm: 139 µm (5.5 mils) 0.45 and 1 µm: 135 µm (5.3 mils)
Typical Air Flow Rate L/min/cm ² at 0.7 bar (70 kPa, 10 psi)	0.5 µm: 1 1 µm: 14.6 2 µm: 25.3 3 µm: 53	1 µm: 17 2 µm: 53 3 µm: 90	5 µm: 13	0.2 µm: 2 0.45 µm: 3 1 µm: 7
Minimum Bubble Point - IPA bar (psi)	Not applicable	Not applicable	Not applicable	0.2 µm: 1.0 (15) 0.45 µm: 0.4 (6) 1 µm: 0.1 (2)
Water Breakthrough bar (psi)	Not applicable	Not applicable	Not applicable	0.2 µm: 2.8 (40) 0.45 µm: 1.1 (16) 1 µm: 1.0 (15)
Typical Aerosol Retention*	0.5, 1, and 2 µm: 99.99% 3 µm: 99.98%	1 and 2 µm: 99.99% 3 µm: 99.79%	Not applicable	Not applicable

*Following ASTM D 2986-95A 0.3 µm (DOP) at 32 L/min/100 cm² filter media.

Related Products

- ▶ [47 mm Glass Filter Funnels](#)
- ▶ [Open-face Filter Holders](#)
- ▶ [SolVac™ Filter Holder](#)
- ▶ [Stainless Steel Forceps](#)
- ▶ [Vacuum/Pressure Pumps](#)

Ordering Information

Part Number	Description	Pkg	Price	Qty
Zefluor and Zylon Membrane Disc Filters				
P5PQ025	Zefluor, 0.5 µm, 25 mm	100/pkg	NA	<input type="text" value="0"/>
P5PQ047	Zefluor, 0.5 µm, 47 mm	50/pkg	NA	<input type="text" value="0"/>
P5PL025	Zefluor, 1 µm, 25 mm	100/pkg	NA	<input type="text" value="0"/>
P5PL037	Zefluor, 1 µm, 37 mm, with support pads	50/pkg	NA	<input type="text" value="0"/>
P5PL047	Zefluor, 1 µm, 47 mm	50/pkg	NA	<input type="text" value="0"/>
P5PL090	Zefluor, 1 µm, 90 mm	50/pkg	NA	<input type="text" value="0"/>
P5PL001	Zefluor, 1 µm, 8 x 10 in.	25/pkg	NA	<input type="text" value="0"/>
60048	Zefluor, 2 µm, 25 mm	100/pkg	NA	<input type="text" value="0"/>
P5PJ037	Zefluor, 2 µm, 37 mm, with support pads	50/pkg	NA	<input type="text" value="0"/>
P5PJ047	Zefluor, 2 µm, 47 mm	50/pkg	NA	<input type="text" value="0"/>
P5PJ001	Zefluor, 2 µm, 8 x 10 in.	25/pkg	NA	<input type="text" value="0"/>
60230	Zefluor, 3 µm, 50 mm	50/pkg	NA	<input type="text" value="0"/>
60537	Zefluor, 3 µm, 90 mm	25/pkg	N/A	<input type="text" value="0"/>
P5PI001	Zefluor, 3 µm, 8 x 10 in.	25/pkg	NA	<input type="text" value="0"/>
P4PH037	Zylon, 5 µm, 37 mm, with support pads	50/pkg	NA	<input type="text" value="0"/>
P4PH047	Zylon, 5 µm, 47 mm	50/pkg	NA	<input type="text" value="0"/>
Teflo Membrane Disc Filters				
R2PL037	1 µm, 37 mm	50/pkg	NA	<input type="text" value="0"/>
R2PL047	1 µm, 47 mm	50/pkg	NA	<input type="text" value="0"/>
R2PJ037	2 µm, 37 mm	50/pkg	NA	<input type="text" value="0"/>
R2PJ041	2 µm, 41 mm	50/pkg	NA	<input type="text" value="0"/>
R2PJ047	2 µm, 47 mm	50/pkg	NA	<input type="text" value="0"/>
R2PI025	3 µm, 25 mm	50/pkg	NA	<input type="text" value="0"/>
60146	3 µm, 47 mm	50/pkg	NA	<input type="text" value="0"/>
TF (PTFE) Membrane				
66141	TF 200, 0.2 µm, 13 mm	100/pkg	NA	<input type="text" value="0"/>
66142	TF 200, 0.2 µm, 25 mm	100/pkg	NA	<input type="text" value="0"/>
66143	TF 200, 0.2 µm, 47 mm	100/pkg	NA	<input type="text" value="0"/>

66630	TF 200, 0.2 µm, 50 mm	100/pkg	NA	<input type="text" value="0"/>
66145	TF 200, 0.2 µm, 142 mm	25/pkg	NA	<input type="text" value="0"/>
66146	TF 200, 0.2 µm, 293 mm	25/pkg	NA	<input type="text" value="0"/>
66147	TF 450, 0.45 µm, 13 mm	100/pkg	NA	<input type="text" value="0"/>
66148	TF 450, 0.45 µm, 25 mm	100/pkg	NA	<input type="text" value="0"/>
66149	TF 450, 0.45 µm, 47 mm	100/pkg	NA	<input type="text" value="0"/>
66631	TF 450, 0.45 µm, 50 mm	100/pkg	NA	<input type="text" value="0"/>
66151	TF 450, 0.45 µm, 142 mm	25/pkg	NA	<input type="text" value="0"/>
66152	TF 450, 0.45 µm, 293 mm	25/pkg	NA	<input type="text" value="0"/>
66153	TF 1000, 1 µm, 13 mm	100/pkg	NA	<input type="text" value="0"/>
66154	TF 1000, 1 µm, 25 mm	100/pkg	NA	<input type="text" value="0"/>
66159	TF 1000, 1 µm, 37 mm, with support pads	100/pkg	NA	<input type="text" value="0"/>
66155	TF 1000, 1 µm, 47 mm	100/pkg	NA	<input type="text" value="0"/>
66158	TF 1000, 1 µm, 293 mm	25/pkg	NA	<input type="text" value="0"/>

Contact Information

Pall Office(s)

World Headquarters
25 Harbor Park Drive
Port Washington, NY 11050
USA
Phone: (516) 484-3600
Alternate Phone: **1-800-289-7255**
Fax: (516) 801-9754
[Driving Directions](#)
[Map](#)

Distributor(s)

VWR International
1310 Goshen Parkway
West Chester, PA 19380
USA
Phone: 800.932.5000
Phone: 610.431.1700
Fax: 610.436.1760
Web: <http://www.vwrsp.com/>