

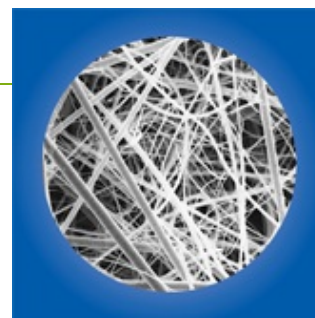


## Glass Fiber Filters

### Description

#### Superior Grade Filters for a Variety of Biological and Environmental Methods

- ▶ Type A/E meets the requirements for suspended solids testing, as described in Standard Methods for the Examination of Water and Wastewater, current edition.
- ▶ Reduces filtration costs and premature clogging when filtering difficult-to-filter or highly contaminated solutions.
- ▶ Extends filter life and reduces final filter changes with high capacity prefilters.
- ▶ Eliminates sample contamination. Binder-free borosilicate glass fiber has no added extractables.
- ▶ Filters a wide range of particulate loads and viscous solutions with a selection of filter thicknesses from which to choose.
- ▶ Filters with binder offer excellent wet strength for easy handling and filter integrity.



### Application

Used in a variety of sample clean-up, prefiltration, and analytical testing applications. Choose between binder-free borosilicate glass for complete purity or glass fiber with acrylic binder for added strength.

#### Type A/E Glass Fiber

- ▶ For testing dissolved and suspended solids in wastewater and gravimetric analysis of air pollutants.
- ▶ High flow rates, wet strength, and dirt (solids) holding capacities.

#### Type A/B Glass Fiber

- ▶ High dirt-loading capacity with 2.5 times thicker glass than Type A/C.
- ▶ Manufactured of the highest quality borosilicate glass microfibers.

#### Type A/C Glass Fiber

- ▶ For testing dissolved and suspended solids in wastewater.
- ▶ Useful for cell harvesting applications.
- ▶ Purity eliminates risk of unwanted contaminants leaching into the filtrate.

#### Type A/D Glass Fiber

- ▶ Excellent prefilters for solutions with a heavy load of large-sized particulate that must be removed.
- ▶ Large nominal pore size reduces membrane clogging.

#### Extra Thick Glass Fiber With Binder

- ▶ Preferred for prefiltration of viscous biological solutions.
- ▶ High particulate-holding capacity makes discs efficient depth filters and allows for filtration of large volumes of solutions.

#### Metrigard™ Glass Fiber With Binder

- ▶ Useful for prolonging membrane filter life in liquid systems that contain substantial amounts of particulate matter.

#### TCLP Glass Fiber

- ▶ Designed to meet requirements for use in U.S. EPA SW-846 Method 1311: Toxic Characteristics Leaching Procedure (TCLP).

### Specifications

## Specifications and Selection Chart

Description	Type A/E	Type A/B	Type A/C
<b>Typical Applications</b>	Water solids testing, air monitoring, gravimetric analysis	Diagnostic applications, sample prefiltration	Cell harvesting, prefiltration, solids testing
<b>Filter Media</b>	Borosilicate glass without binder	Borosilicate glass without binder	Borosilicate glass without binder
<b>Pore Size (Nominal)</b>	1 µm	1 µm	1 µm
<b>Typical Thickness</b>	330 µm (13 mils)	660 µm (26 mils)	254 µm (10 mils)
<b>Typical Water Flow Rate</b> mL/min/cm <sup>2</sup> at 0.3 bar (30 kPa, 5 psi)	250	124	153
<b>Typical Air Flow Rate</b> L/min/cm <sup>2</sup> at 0.7 bar (70 kPa, 10 psi)	60	24	40
<b>Maximum Operating Temperature</b>	Air - 550 °C (1,022 °F)	Air - 550 °C (1,022 °F)	Air - 550 °C (1,022 °F)
<b>Sterilization</b>	Autoclavable	Autoclavable	Autoclavable
<b>Typical Aerosol Retention*</b>	99.98%	–	–

Description	Type A/D	Extra Thick Discs	Metrigard™ Discs	TCLP
<b>Typical Applications</b> with large-sized particulate	Prefiltration of solutions contaminated samples	Prefiltration of heavily	Prefiltration in systems with high particulate matter	U.S. EPA Method 1311
<b>Filter Media</b>	Borosilicate glass without binder	Glass fiber with acrylic binder**	Ultrafine glass fiber with acrylic binder**	Borosilicate glass without binder***
<b>Pore Size (Nominal)</b>	3 µm	1 µm	0.5 µm	0.7 µm
<b>Typical Thickness</b>	660 µm (26 mils)	1270 µm (50 mils)	330 µm (13 mils)	432 µm (17 mils)
<b>Typical Water Flow Rate</b> mL/min/cm <sup>2</sup> at 0.3 bar (30 kPa, 5 psi)	649	210	80	–
<b>Typical Air Flow Rate</b> L/min/cm <sup>2</sup> at 0.7 bar (70 kPa, 10 psi)	139	26	21	–
<b>Maximum Operating Temperature</b>	Air - 550 °C (1,022 °F)	Water - 135 °C (275 °F)	Water - 135 °C (275 °F)	N/A
<b>Sterilization</b>	Autoclavable	Autoclavable	Autoclavable	Autoclavable
<b>Typical Aerosol Retention*</b>	–	99.97%	–	–

\* Following ASTM D 2986-95A 0.3 µm (DOP) at 32 L/min/100 cm<sup>2</sup> filter media.

\*\* Binder is 5% of total material.

\*\*\* TCLP glass fiber filters are not acid washed.

## Related Products

- ▶ [142 & 293 mm Stainless Steel Disc Filter Holders](#)
- ▶ [47 mm Magnetic Filter Funnels](#)
- ▶ [Acrodisc® Syringe Filters with Glass Fiber](#)

## Ordering Information

Part Number	Description	Pkg	Price	Qty
-------------	-------------	-----	-------	-----

**Type A/E Glass Fiber Discs and Sheets, 1  $\mu$ m**

61628	13 mm	500/pkg	NA	<input type="text" value="0"/>
61630	25 mm	500/pkg	NA	<input type="text" value="0"/>
60097	30 mm	100/pkg	NA	<input type="text" value="0"/>
61654	35 mm	100/pkg	NA	<input type="text" value="0"/>
61652	37 mm	500/pkg	NA	<input type="text" value="0"/>
65475	42.5 mm	100/pkg	NA	<input type="text" value="0"/>
61631	47 mm	100/pkg	NA	<input type="text" value="0"/>
61632	50 mm	100/pkg	NA	<input type="text" value="0"/>
60140	55 mm	100/pkg	NA	<input type="text" value="0"/>
60012	57 mm	100/pkg	NA	<input type="text" value="0"/>
60150	63 mm	100/pkg	NA	<input type="text" value="0"/>
61665	70 mm	100/pkg	NA	<input type="text" value="0"/>
61663	76 mm	100/pkg	NA	<input type="text" value="0"/>
60010	81 mm	100/pkg	NA	<input type="text" value="0"/>
60127	82.5 mm	100/pkg	NA	<input type="text" value="0"/>
60118	85 mm	100/pkg	NA	<input type="text" value="0"/>
61664	90 mm	100/pkg	NA	<input type="text" value="0"/>
61633	102 mm	100/pkg	NA	<input type="text" value="0"/>
60115	110 mm	100/pkg	NA	<input type="text" value="0"/>
61655	124 mm	100/pkg	NA	<input type="text" value="0"/>
65476	125 mm	100/pkg	NA	<input type="text" value="0"/>
61669	127 mm	100/pkg	NA	<input type="text" value="0"/>
66559	142 mm	25/pkg	NA	<input type="text" value="0"/>
61635	142 mm	100/pkg	NA	<input type="text" value="0"/>
61675	257 mm	100/pkg	NA	<input type="text" value="0"/>
66560	293 mm	25/pkg	NA	<input type="text" value="0"/>
61637	293 mm	100/pkg	NA	<input type="text" value="0"/>
61638	8 x 10 in.	100/pkg	NA	<input type="text" value="0"/>

**Type A/B Glass Fiber Discs and Sheets, 1  $\mu$ m**

66196	13 mm	100/pkg	NA	<input type="text" value="0"/>
66198	25 mm	100/pkg	NA	<input type="text" value="0"/>
66208	37 mm	100/pkg	NA	<input type="text" value="0"/>
66209	47 mm	100/pkg	NA	<input type="text" value="0"/>
66210	142 mm	25/pkg	NA	<input type="text" value="0"/>
66211	8 x 10 in.	25/pkg	NA	<input type="text" value="0"/>

**Type A/C Glass Fiber Discs and Sheets, 1 µm**

66213	25 mm	100/pkg	NA	<input type="text" value="0"/>
66214	37 mm	100/pkg	NA	<input type="text" value="0"/>
66215	47 mm	100/pkg	NA	<input type="text" value="0"/>
65529	70 mm	100/pkg	NA	<input type="text" value="0"/>
66216	142 mm	25/pkg	NA	<input type="text" value="0"/>
66217	8 x 10 in.	25/pkg	NA	<input type="text" value="0"/>

**Type A/D Glass Fiber Discs and Sheets, 3 µm**

66218	13 mm	100/pkg	NA	<input type="text" value="0"/>
66220	25 mm	100/pkg	NA	<input type="text" value="0"/>
66222	37 mm	100/pkg	NA	<input type="text" value="0"/>
66224	47 mm	100/pkg	NA	<input type="text" value="0"/>
66226	142 mm	25/pkg	NA	<input type="text" value="0"/>
66227	8 x 10 in.	25/pkg	NA	<input type="text" value="0"/>

**Glass Fiber Discs with Binder, Extra Thick, 1 µm**

66073	13 mm	100/pkg	NA	<input type="text" value="0"/>
66075	25 mm	100/pkg	NA	<input type="text" value="0"/>
66078	47 mm	100/pkg	NA	<input type="text" value="0"/>
66084	127 mm	50/pkg	NA	<input type="text" value="0"/>
66085	142 mm	50/pkg	NA	<input type="text" value="0"/>
66086	257 mm	25/pkg	NA	<input type="text" value="0"/>
66088	293 mm	25/pkg	NA	<input type="text" value="0"/>

**Metrigard™ Glass Fiber Discs with Binder, 0.5 µm**

64798	47 mm	100/pkg	NA	<input type="text" value="0"/>
64803	142 mm	100/pkg	NA	<input type="text" value="0"/>

**TCLP Glass Fiber Filters**

66251	13 mm	100/pkg	NA	<input type="text" value="0"/>
66258	47 mm	50/pkg	NA	<input type="text" value="0"/>
66256	90 mm	50/pkg	NA	<input type="text" value="0"/>
66259	110 mm	50/pkg	NA	<input type="text" value="0"/>
60159	115 mm	50/pkg	NA	<input type="text" value="0"/>
66257	142 mm	50/pkg	NA	<input type="text" value="0"/>
60076	293 mm	25/pkg	NA	<input type="text" value="0"/>

## Pall Office(s)

---

### **World Headquarters**

25 Harbor Park Drive  
Port Washington, NY 11050  
USA  
Phone: (516) 484-3600  
Alternate Phone: **1-800-289-7255**  
Fax: (516) 801-9754  
[Driving Directions](#)  
[Map](#)

## Distributor(s)

---

### **VWR International**

1310 Goshen Parkway  
West Chester, PA 19380  
USA  
Phone: 800.932.5000  
Phone: 610.431.1700  
Fax: 610.436.1760  
Web: <http://www.vwrsp.com/>

---

© 2014, Pall Corporation, Pall, and other names are trademarks of Pall Corporation.

® indicates a registered trademark in the USA.